

EXTRA T

Mounting	Table
Lamps description	I COB LED 2700K 1590lm CRI83 - 16W DIMMER
Environment	Indoor
Finish	Silver, Anodized bronze, Anodized graphite
Technical description	Table lamp providing diffuse light. Painted or anodized aluminium body made by CNC machining. Hand-blown opal glass diffuser. Power cord length 200 cm, with dimmer switch that provide ON-OFF functions and 10-100% light adjustment. Plug-in power supply with interchangeable plugs

ELECTRICAL

Emergency	Without
Switching	Dimmer switch on the power cable

PHYSICAL




Supply	Power cord
Construction material	Aluminum, Blown glass



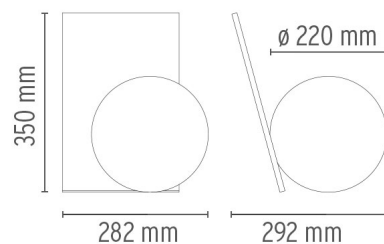
Extra T

designed by Michael Anastassiades

Table lamp providing diffuse light.

	F2130046	Anodized bronze
	F2130004	Silver
	F2130033	Anodized graphite

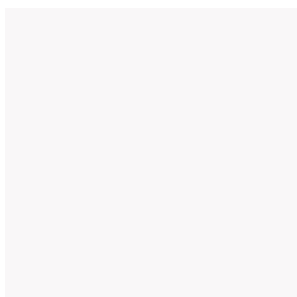
DIMENSIONS



CERTIFICATIONS



Extra T . Lamps



I COB LED 2700K
1590lm CRI83 - 16W

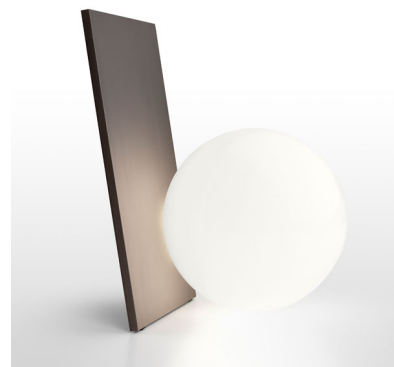
Lamp wattage:
16 W

Lamp category:
LED

Socket:
Special base

Color temperature (K):
2700 °K




Lamp type:
LED



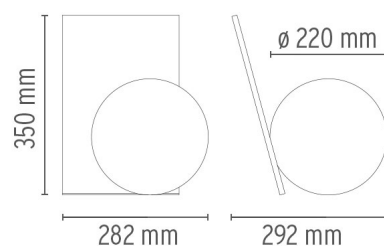
Extra T

designed by Michael Anastassiades

Table lamp providing diffuse light.

	F2130046	Anodized bronze
	F2130004	Silver
	F2130033	Anodized graphite

DIMENSIONS



CERTIFICATIONS



IP
20